

Feeneys Clay Bodies

Feeneys Chocolate Brown

FCB

AR560

Bisque: 1046°C Orton Cone 05 - Minimum

Firing Range: 900-1200°C Orton Cone 010 -5

Delicious looking Chocolatey clay....

Beautifully plastic and you can throw, hand build, coil and slab.

Has especially wonderful fired results under Cesco 6251 white glaze.

Fires to a medium brown at earthenware and a beautiful rich chocolate brown at 1200.

Firing range of 900 to 1200.

Recommend a slow bisque fire to Cone 05.

Suits glazes from earthenware to midfire.

The crude materials are blended, hammer milled, magnetted, sieved then extruded twice through deairing pugmills. They are then sealed airtight in both a thin inner and a thick outer polythene bag, which enables long term storage.

Origin: Made in Queensland with a majority of Australian local materials

Glazes

All standard raku, earthenware, midfire and stoneware glazes can be used with this body.

Clear Glazes: 5223, 5381, 5490, 6250

Packaging

Plastic Clay ~12.5 kg packs and ~1-1.25kg samples.

Technical:

Bisque: 1000-1060°C Orton Cone 06-04

Firing range: 1000-1200°C Orton Cone 06-5

Mesh size: 14 mesh Hammer Milled

Texture: Medium-Coarse

% Shrinkage wet to dry: 5.3%

% Shrinkage wet to bisque: 6.0%

% Shrinkage wet to fired: 8.5% @ 1080°C

% Shrinkage wet to fired: 11.0% @ 1200°C

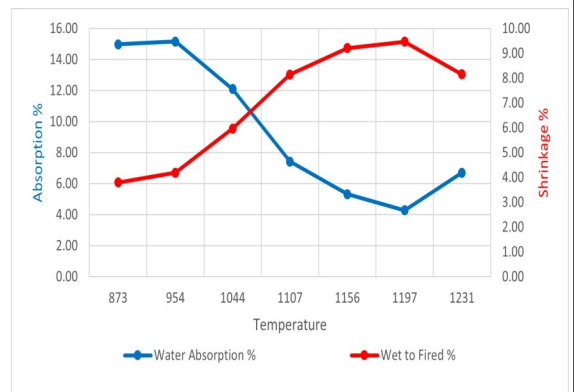
Absorption: Bisque = 13.9%

Vitreous Temperature: >1200°C Orton Cone 5/6

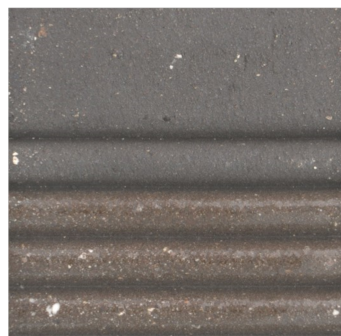
Fired colour (1200): Rich chocolate brown

Fired colour (reduction): N/A

Typical Chemical Analysis	
SiO ₂	55.63%
Al ₂ O ₃	22.66%
TiO ₂	1.30%
Fe ₂ O ₃	5.33%
CaO	0.10%
MgO	0.72%
Na ₂ O	0.40%
K ₂ O	2.51%
MnO ₂	4.75%
L.O.I.	6.68%



1080°C



1200°C

