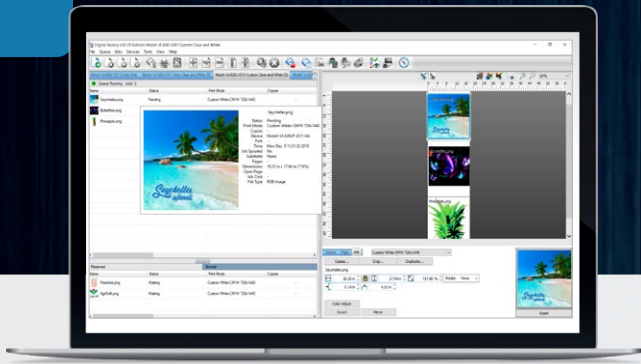


# MAXIMIZE THE DESIGN AND PRODUCTION POSSIBILITIES OF YOUR UV PRINTER

Specialized UV printing RIP software that includes custom drivers and color profiles for most widely used UV printers. An industry-leading color management engine alongside a wide variety of pre-production and print production tools maximize the return on investment of your UV printer by simplifying and enabling all types of production possibilities.



# LEADING EDGE COLOR MANAGEMENT & PRODUCTION WORKFLOW TECHNOLOGY



## HIGH FIDELITY COLOR. PRECISE COLOR REPRODUCTION WITH UNMATCHED VIBRANCY

Using a state of the art color management engine, Digital Factory UV Edition provides an extended color gamut and also includes professionally created color profiles that provide the most vibrant, color accurate prints available today.

## INDUSTRY-LEADING WHITE INK MANAGEMENT

Automated settings as well as manual user controls provide the utmost in white ink management. Unique handling of white underbase based on pixel transparency provides the smoothest blends, gradients and fades. Provides amazing print quality and saves on white ink costs at the same time.



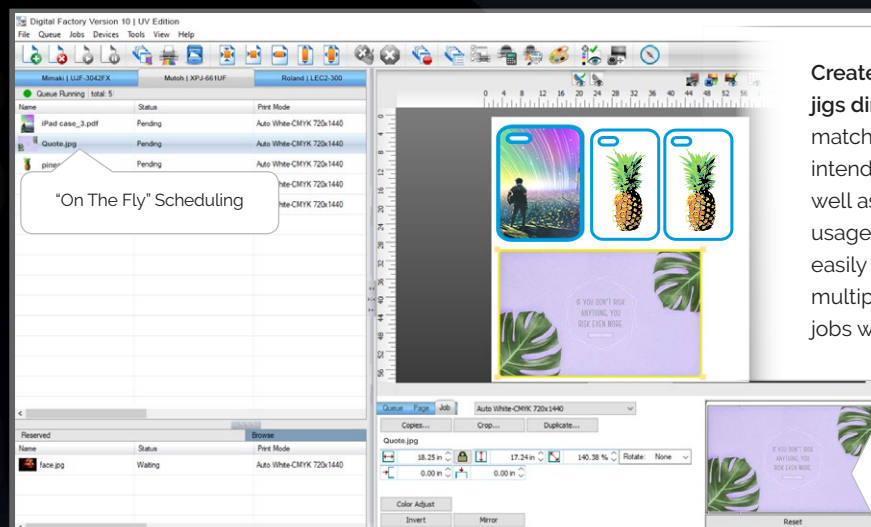
## COMPLETE, CENTRALISED JOB MANAGEMENT

Digital Factory UV Edition features Visual Production Manager™, a simple easy to use interface that includes multiple pre-set queues that support a variety of color and production requirements.

Easy Access Multiple Queue Tabs

Each queue displays in-process and pending jobs

Archived job list or built-in browse functionality to locate files



Create templates and jigs directly in the RIP to match printed item shape, intended print location as well as to optimize material usage. Jigs can also be easily created to print multiple items in single run jobs with exact precision.

Selected job information and easy-edit options

# SIMPLIFIED, HIGH-VALUE PRINT PRODUCTION



## UNMATCHED TEXTURED PRINTING TOOLS AND PRE-SETS

UV printing provides almost limitless production possibilities. Pre-set production queues simplify what can sometimes be complex production set-ups. For even more control, Individual ink channel controls provide advanced, precision controls over production effects such as image build-up, highlights, gloss finishes and much more.



## AUTOMATED UNDERBASE/OVERPRINT

Preparing files within design applications to include underbase as well as overprint data is a time-consuming task that requires expert design knowledge. Digital Factory includes automated queue pre-sets that eliminate the need for file pre-production.



## BUILT-IN DESIGN AND PRODUCTION PLUG-INS

Special effects plug-ins as well as production plug-ins such as SuperSize image provide the ability to modify as well as improve over-all image quality directly within the RIP software without having to use third-party applications.

## BLEND SUBSTRATE COLOR DIRECTLY INTO PRINTED DESIGN

Automated black, white or color removal from design utilizes matching substrate color as part of completed print job. Improves overall print appearance while also reducing ink consumption.



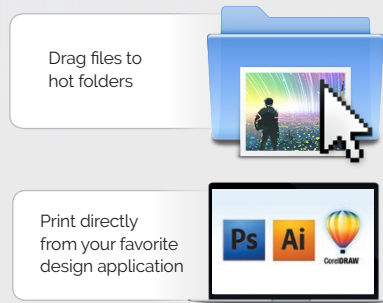
# ENHANCED, AUTOMATED WORKFLOW SUPPORT

Automation tools that extend capabilities to higher volume production management as your business grows. Hot folder support combined with advanced barcode functionality enable customized job management tailored to your workflow.



## VIRTUALLY UNLIMITED FILE FORMAT SUPPORT

Support for most widely used file formats including a built-in, industrial strength .pdf interpreter provides flexible file handling options.



Seamless integration with widely used design applications such as Corel® and Adobe® products eliminates need to file export/import into RIP software



Digital Factory's advanced print processing algorithm prints even the most complex files quickly and efficiently.

# DIGITAL FACTORY UV EDITION FEATURES

## PERFORMANCE AND COMPATIBILITY FEATURES

- Customized drivers and color profiles for most widely used UV printers optimize print speed and color quality.
- Windows® 11, 10 (32/64 bit) support
- Lightning fast 64-bit architecture
- Unique, single window visual interface
- Simplified software navigation; queue tabs, page view, job properties
- Tab-based multiple queue system based on job type, color requirements & printer
- On-the-fly job scheduling with drag and drop file handling
- Complete production control; Job archiving, history, print status, job log
- Network printing support using hot folders
- Automated TCPIP port search for easier network print setup
- Barcode support for automated production workflow
- "Send-to" plug-ins for Adobe® and Corel® products
- Optimized RIP processing speeds including RIP threading (multiple job processing)
- RIP once, print many
- Seamless .PDF support as well as many other widely used file formats

- Inline print support. Single pass color, white clear printing (dependant on printer capability)
- Worldwide language support adhering to Unicode standards

## UV SPECIFIC COLOR MANAGEMENT AND PRODUCTION FEATURES

- Vibrant, high fidelity color printing on wide variety of materials
- Professional color profiles included (white, black, colored substrates)
- Pre-set printing queues provide a variety of print options including flat and textured pre-sets
- Complete color controls by image detail (shadows, midtones, highlights)
- Ability to fine tune all color channels and ink volumes
- Easy color adjustments by job or queue
- Quick job color replacement tools
- Industry-leading white ink management
- Automated white underbase based on image transparency (incl. PDF/EPS)
- Automated overprint for clear or white highlight printing
- Simplified textured, multi-layered 3 dimensional printing

- Texturing by ink channel controls
- Braille printing support. (Braille support requires the Digital Factory UV DesignPro add-on module).

## BUILT IN PRE-PRODUCTION TOOLS

- Supersize image. Scale low resolution images reducing pixelization
- "Knock Me Black Out"
- "Knock Me Color Out"
- Automatic image trapping by color plane
- Special effects tools/filters incl. distressed, distressed frames, sharpen.
- Advanced transparency support for vector and bitmap designs
- Complete print preview
- Preview raw data by each color channel
- Custom template creation
- Integrated jig design for material shapes of all types (within template feature)
- Pre-production tools; Copy, Crop, Rotate, Mirror, Scale
- Detailed job costing
- Automated job nesting helps reduce material costs

## FIERY FAMILY OF SOFTWARE PRODUCTS

Discover the benefits of using a single source for all your design and production requirements



[www.cadlink.com](http://www.cadlink.com)

Digital Factory is a registered trademark of Fiery, LLC. All other trademarks are a property of their respective owners.

### SUPPORTED PRINTERS:

Visit [cadlink.com/supportedoutputs/](http://cadlink.com/supportedoutputs/) for a list of all supported printers.

### CONNECT WITH US:



### COMPATIBLE WITH:



### SYSTEM REQUIREMENTS:

	MINIMUM	RECOMMENDED
CPU	Dual Core (2.0 Ghz or higher)	Triple Core (2.0 Ghz or higher)
HDD	500 GB	750+ GB
RAM	2 GB	4GB