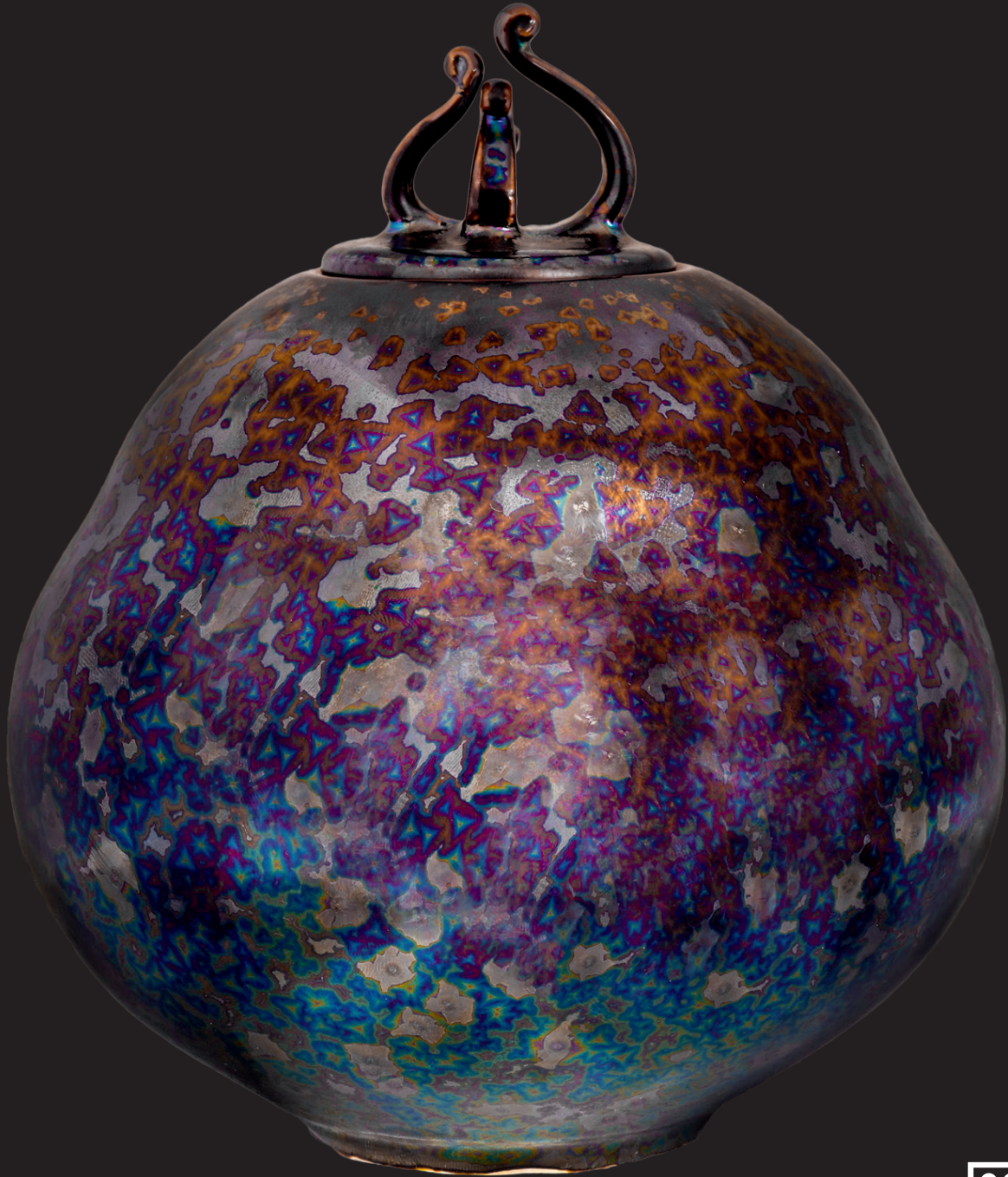


COSMOS

GLAZES THAT ARE OUT OF THIS WORLD



 Cone 5/6

Gourd Jar with up-down firing by Michael Sprague

AMACO
brent

the COSMOS ADVANTAGE

- Iridescent, crystalline effects right out of the jar
- Grows dramatic crystals fast- no hold necessary
- Variety of colors and aesthetic versatility!



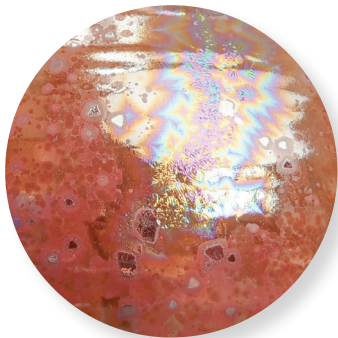
CO-6 Supernova



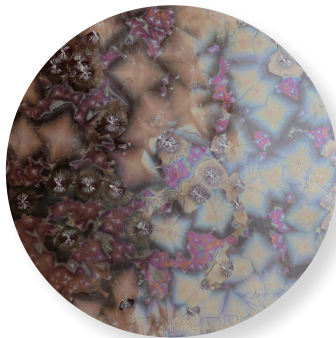
CO-7 Solar Flare



CO-8 Dark Star



CO-13 Mars Crystal



CO-14 Solar Rainbow

Category: Mid-High Fire Glaze

Firing Temperature: Cone 5 - Cone 6

Tiles are AMACO A-Mix White Stoneware No.11.

CO-6 tile was fired to Cone 5. Remaining tiles fired to Cone 6.



Conforms to
ASTM D-4236



Food Safe

Definition of Cone Temperatures

Cone 5 = 1184 °C (at 150°C/hour for the final 100°C of firing) / 2201°F (at 270°F/hour in the final 200°F of firing)

Cone 6 = 1241°C (at 150°C/hour for the final 100°C of firing) / 2266°F (at 270°F/hour in the final 200°F of firing)

LAYERING WITH VELVET UNDERGLAZES

CO-6 Supernova layers nicely with AMACO's Velvet Underglazes. Tiles on AMACO A-Mix White Stoneware No.11. Fired to Cone 5.



CO-6 Supernova over
V-317 Coral



CO-6 Supernova over
V-389 Flame Orange



CO-6 Supernova over
V-308 Yellow



CO-6 Supernova over
V-343 Chartreuse



CO-6 Supernova over
V-386 Electric Blue



CO-6 Supernova over
V-379 Ultra Violet

Cover Gourd Jar: CO-14 Solar Rainbow on AMACO A-Mix White Stoneware No.11. Custom firing schedule on next page.

TIPS AND TRICKS

- For best results, leave inside or back of form unglazed to avoid pinholing.
- Firing schedules:
 - ✦ Can be fired in a normal, medium speed firing with no special cooling schedule
 - ✦ Use a controlled cooling schedule for increased crystal growth
- If glazing a piece all the way to the end of the foot, we recommend using a **drip tray** to protect your kiln shelves. Scan the QR code to learn how!

FAQ

Apply to... Cone 04 Bisqueware

Number of coats? 4 coats

Fire to... Cone 5 - Cone 6

Food safe? Yes, but due to durability, these glazes are not recommended for food surfaces



How to Use a Drip Tray

BEST FORMS AND USES

TIP: Use horizontal textures at or near the base of pieces to slow down or catch the flow of glaze!

CO-7 Solar Flare on AMACO A-Mix White Stoneware No. 11. Fired to Cone 5.



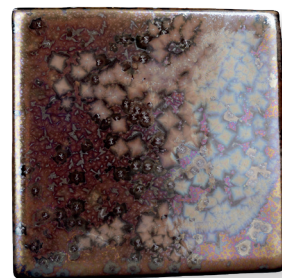
Decorative (non-functional vessels)

CO-13 Mars Crystal on AMACO A-Mix White Stoneware No. 11. Fired to Cone 6.



Sculpture

CO-14 Solar Rainbow on AMACO A-Mix White Stoneware No. 11. Fired to Cone 5.



Tiles

VERTICAL VS HORIZONTAL

Crystals will develop on both horizontal and vertical surfaces. Vertical surfaces will encourage running.

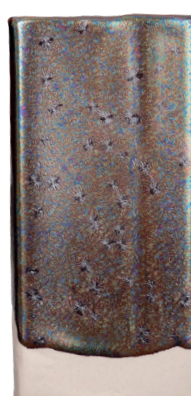
Tiles are AMACO A-Mix White Stoneware No. 11, fired to Cone 5.



CO-8 Dark Star
Fired Vertically



CO-13 Mars Crystal
Fired Vertically



CO-8 Dark Star
Fired Horizontally



CO-13 Mars Crystal
Fired Horizontally

TIP: More coats can mean more magic, but it also means more running. Protect your kiln shelves!

TAKE YOUR COSMOS TO THE NEXT LEVEL



While these glazes can produce crystalline glaze effects with no special schedules, using a controlled cooling schedule can increase crystal growth and take your glazes to the next level!

Also, the chemistry of these gorgeous glazes makes them prone to pinholing. We have a couple ways to counter this:

1. Use on a narrow neck or closed form and DO NOT glaze the inside. This will allow gasses to escape through the unglazed area.
2. If the inside and outside of the pot is glazed, we recommend this firing schedule (see below):

COSMOS UP-DOWN FIRING SCHEDULE

RAMP SEGMENT	RATE (FAHRENHEIT)	TEMP (FAHRENHEIT)	HOLD
1	400°	2000°	0:00
2	120°	2225°	0:00
3	9999°	1600°	0:00
4	400°	2000°	0:00
5	120°	2160°	0:05

Vases are CO-14 Solar Rainbow on AMACO A-Mix White Stoneware No.11.



Normal Cone 6, glazed inside and out



1. Normal Cone 6, unglazed inside



2. Up-Down Schedule, glazed inside and out